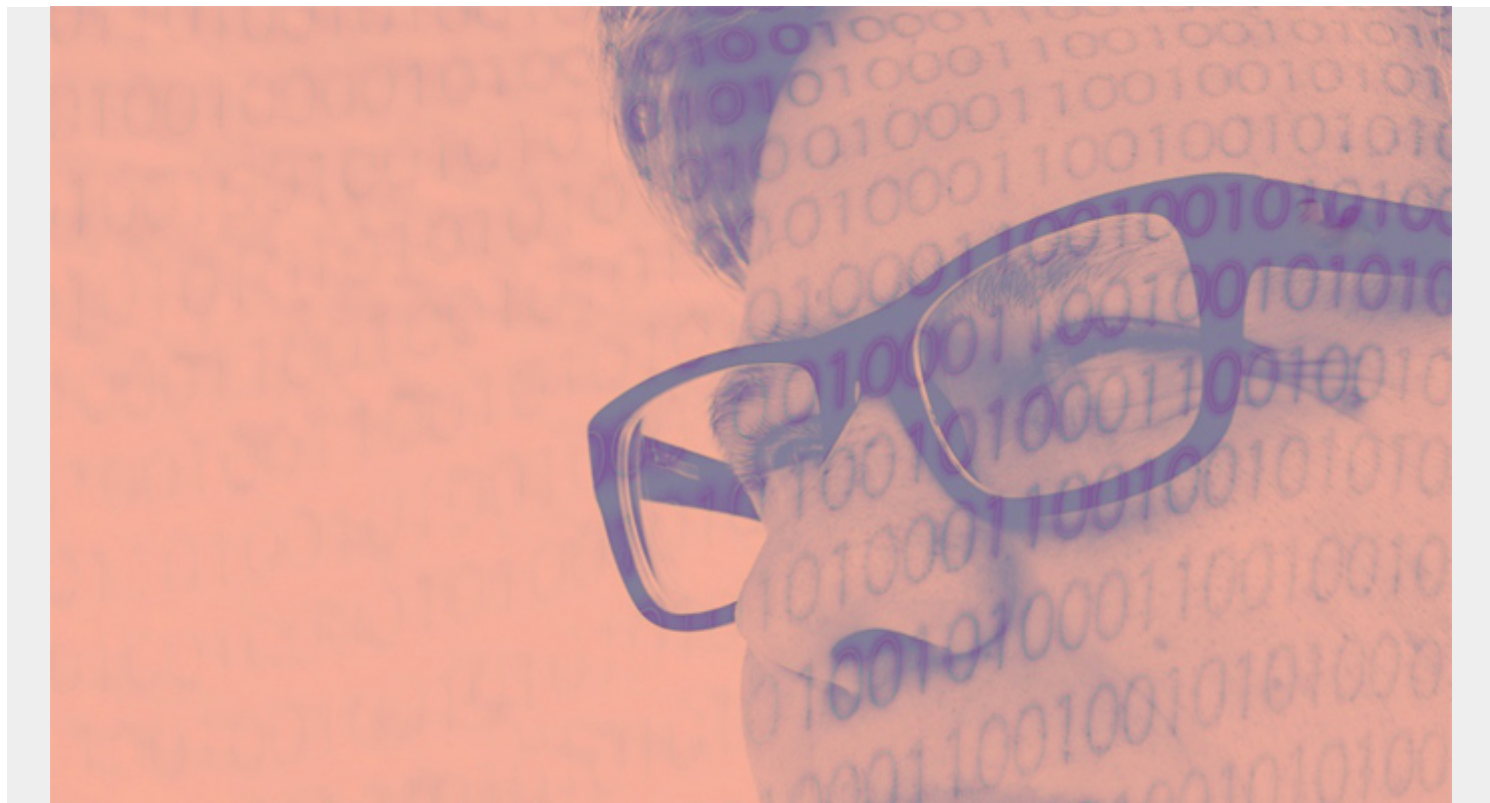


IFCIDS IN DB2 12



Trace Type	Class	IFCID	Description
------------	-------	-------	-------------

	3	ALL ACCOUNTING
	106	SYSTEM PARAMETERS IN EFFECT
1	200	UDF ENTRY/EXIT SIGNAL
	239	OVERFLOW FOR PACKAGE ACCOUNTING
2	200	UDF ENTRY/EXIT SIGNAL
	232	DB2 THREAD ENTRY/EXIT SIGNAL
	6	BEGINNING OF A READ I/O OPERATION
	7	CC AFTER READ I/O OPERATION
	8	BEGINNING OF SYNCHRONOUS WRITE I/O
	9	CC OF SYNC OR ASYNC WRITE I/O
	32	BEGIN OF WAIT FOR LOG MANAGER
	33	END OF WAIT FOR LOG MANAGER
	44	LOCK SUSPEND OR IDENTITY CALL IRLM
	45	LOCK RESUME
	51	SHARED LATCH RESUME. SERVICEABILITY
	52	SHARED LATCH WAIT. SERVICEABILITY
	56	EXCL. LATCH WAIT. SERVICEABILITY
	57	EXCL. LATCH RESUME. SERVICEABILITY
	117	BEGIN THREAD WAIT TIME FOR LOG I/O
	118	END THREAD WAIT TIME FOR LOG I/O
	127	AGENT READY TO SUSPEND PAGE WAIT
3	128	PAGE REQUESTOR RESUMED BY I/O UNIT
	170	SUSPEND FOR SYNC EXEC. N UNIT SWITCH
	171	RESUME AGENT WAITING DB2 SERV. TASK
	174	BEGIN ARCHIVE LOG MODE (QUIESCE)
	175	END ARCHIVE LOG MODE (QUIESCE)
	213	BEGIN OF WAIT FOR CLAIM REQUEST
	214	END OF WAIT FOR CLAIM REQUEST
	215	BEGIN OF WAIT FOR DRAIN REQUEST
	216	END OF WAIT FOR DRAIN REQUEST
	226	BEGIN OF SUSPEND FOR PAGE LATCH
	227	END OF SUSPEND FOR PAGE LATCH
	242	BEGIN WAIT FOR SCHED. STORED PROC.
	243	END WAIT FOR SCHED. STORED PROC.
	313	MESSAGES FOR LONG-RUNNING URS.
	382	SUSPEND OPERATIOINS FOR PARALLEL TASK SYNC
	383	RESUME OPERATIOINS AFTER PARALLEL TASK SYNC
ACCOUNTING	4	151 USER-DEFINED ACCOUNTING TRACE
	5	187 ENTRY TO AND EXIT FROM IFI
	200	DB2 THREAD ENTRY/EXIT SIGNAL
	7	232 FOR PACKAGE/DBRM LEVEL ACCOUNTING
	240	EVENT SIGNAL FOR PACKAGE ACCOUNTING
	6	BEGINNING OF A READ I/O OPERATION
	7	CC AFTER READ I/O OPERATION
	8	BEGINNING OF SYNCHRONOUS WRITE I/O
	9	CC OF SYNC OR ASYNC WRITE I/O
	32	BEGIN OF WAIT FOR LOG MANAGER
	33	END OF WAIT FOR LOG MANAGER
	44	LOCK SUSPEND OR IDENTITY CALL IRLM
	45	LOCK RESUME
	51	SHARED LATCH RESUME. SERVICEABILITY
	52	SHARED LATCH WAIT. SERVICEABILITY
	56	EXCL. LATCH WAIT. SERVICEABILITY
	57	EXCL. LATCH RESUME. SERVICEABILITY
	117	BEGIN THREAD WAIT TIME FOR LOG I/O
	118	END THREAD WAIT TIME FOR LOG I/O
8	127	AGENT READY TO SUSPEND PAGE WAIT
	128	PAGE REQUESTOR RESUMED BY I/O UNIT
	170	SUSPEND FOR SYNC EXEC.N UNIT SWITCH
	171	RESUME AGENT WAITING DB2 SERV. TASK
	174	BEGIN ARCHIVE LOG MODE (QUIESCE)
	175	END ARCHIVE LOG MODE (QUIESCE)
	213	BEGIN OF WAIT FOR CLAIM REQUEST
	214	END OF WAIT FOR CLAIM REQUEST
	215	BEGIN OF WAIT FOR DRAIN REQUEST
	216	END OF WAIT FOR DRAIN REQUEST
	226	BEGIN OF SUSPEND FOR PAGE LATCH
	227	END OF SUSPEND FOR PAGE LATCH
	241	BEGIN/END SUSPENSION OF PACK/DBRM
	242	BEGIN WAIT FOR SCHED. STORED PROC.
	243	END WAIT FOR SCHED. STORED PROC.
	382	SUSPEND OPERATIOINS FOR PARALLEL TASK SYNC
	383	RESUME OPERATIOINS AFTER PARALLEL TASK SYNC
10	339	PACKAGE DETAIL
1	140	AUTHORIZATION FAILURES
2	141	EXPLICIT GRANT AND REVOKES
3	142	CREATES, ALTERS, DROPS - AUDIT
4	143	FIRST ATTEMPTED WRITE AUDITED OBJ.
5	144	FIRST ATTEMPTED READ AUDITED OBJ.
6	145	AUDIT LOG RECORD OF SOME SOL STMTS
	55	ISSUANCE OF SET CURRENT SOLID
	83	END IDENTIFY REQUEST
AUDIT	7	87 ENDING OF SIGNON REQUEST
	169	DISTRIBUTED AUTHID TRANSLATION
	312	DCE SECURITY
	23	UTILITY START INFORMATION
	24	UTILITY OBJECT OR PHASE CHANGE
8	25	UTILITY END INFORMATION
	219	LISTDEF DATA SET INFORMATION
	220	UTILITY OUTPUT DATA SET INFORMATION
9	146	USER-DEFINED AUDIT TRACE
11	361	AUDIT ADMINISTRATIVE AUTHORITIES

1	SYSTEM SERVICES
2	DATABASE SERVICES
106	SYSTEM PARAMETERS IN EFFECT
124	CURRENT SQL STATEMENT
129	VSAM CI'S - DB2 RECOVER LOG
147	SUMMARY THREAD STATUS RECORD
148	DETAILED THREAD STATUS RECORD
1	149 LOCK INFORMATION FOR A RESOURCE
150	LOCK INFORMATION FOR AN AGENT IFCID
282	SYSTEM PARAMETERS
238	DATA SHARING GLOBAL STATISTICS
254	GROUP BUFFER POOL USAGE
306	LOG RECORD RETRIEVAL
316	PREPARED STMT. CACHE STATISTICS
317	PREPARED STMT. CACHE STMT. TEXT
2	232 DB2 THREAD ENTRY EXIT SIGNAL
6	BEGINNING OF A READ I/O OPERATION
7	CC AFTER READ I/O OPERATION
8	BEGINNING OF A SYNCHRONOUS WRITE I/O
9	CC OF A SYN OR ASYNC WRITE I/O
32	BEGIN OF WAIT FOR LOG MANAGER
33	END OF WAIT FOR LOG MANAGER
44	LOCK SUSPEND OR IDENTIFY CALL IRLM
45	LOCK RESUME
51	SHARED LATCH RESUME. SERVICEABILITY
52	SHARED LATCH WAIT. SERVICEABILITY
56	EXCL. LATCH WAIT. SERVICEABILITY
57	EXCL. LATCH RESUME. SERVICEABILITY
117	BEGIN THREAD WAIT TIME FOR LOG I/O
118	END THREAD WAIT TIME FOR LOG I/O
127	AGENT READY TO SUSPEND PAGE WAIT
3	128 PAGE REQUESTOR RESUMED BY I/O UNIT
170	SUSPEND FOR SYNC EXEC. UNIT SWITCH
171	RESUME AGENT WAITING DB2 SERV. TSK
174	BEGIN ARCHIVE LOG MODE (QUIESCE)
175	END ARCHIVE LOG MODE (QUIESCE)
213	BEGIN OF WAIT FOR CLAIM REQUEST
214	END OF WAIT FOR CLAIM REQUEST
215	BEGIN OF WAIT FOR DRAIN REQUEST
216	END OF WAIT FOR DRAIN REQUEST
226	BEGIN OF SUSPEND FOR PAGE LATCH
227	END OF SUSPEND FOR PAGE LATCH
242	BEGIN WAIT FOR SCHED. STORED PROC.
243	END WAIT FOR SCHED. STORED PROC.
MONITOR	382 SUSPEND OPERATIONS FOR PARALLEL TASK SYNC
383	RESUME OPERATIONS AFTER PARALLEL TASK SYNC
4	155 USER-DEFINED MONITOR TRACE
5	187 ENTRY OR EXIT TO IPI
6	185 DATA CAPTURE INFORMATION
232	DB2 THREAD ENTRY/EXIT SIGNAL
7	232 FOR PACKAGE/DBRM-LEVEL ACCOUNTING
240	EVENT SIGNAL FOR PACKAGE ACCOUNTING
6	BEGINNING OF A READ I/O OPERATION
7	CC AFTER READ I/O OPERATION
8	BEGINNING OF SYNCHRONOUS WRITE I/O
9	CC OF SYN OR ASYNC WRITE I/O
32	BEGIN OF WAIT FOR LOG MANAGER
33	END OF WAIT FOR LOG MANAGER
44	LOCK SUSPEND OR IDENTIFY CALL IRLM
45	LOCK RESUME
51	SHARED LATCH RESUME. SERVICEABILITY
52	SHARED LATCH WAIT. SERVICEABILITY
56	EXCL. LATCH WAIT. SERVICEABILITY
57	EXCL. LATCH RESUME. SERVICEABILITY
117	BEGIN THREAD WAIT TIME FOR LOG I/O
118	END THREAD WAIT TIME FOR LOG I/O
127	AGENT READY TO SUSPEND PAGE WAIT
8	128 PAGE REQUESTOR RESUMED BY I/O UNIT
170	SUSPEND FOR SYNC EXEC. UNIT SWITCH
171	RESUME AGENT WAITING DB2 SERV.TSK
174	BEGIN ARCHIVE LOG MODE (QUIESCE)
175	END ARCHIVE LOG MODE (QUIESCE)
213	BEGIN OF WAIT FOR CLAIM REQUEST
214	END OF WAIT FOR CLAIM REQUEST
215	BEGIN OF WAIT FOR DRAIN REQUEST
216	END OF WAIT FOR DRAIN REQUEST
226	BEGIN OF SUSPEND FOR PAGE LATCH
227	END OF SUSPEND FOR PAGE LATCH
241	BEGIN/END SUSPENSION OF PACK/DBRM
242	BEGIN WAIT FOR SCHED. STORED PROC.
243	END WAIT FOR SCHED. STORED PROC.
382	SUSPEND OPERATIONS FOR PARALLEL TASK SYNC
383	RESUME OPERATIONS AFTER PARALLEL TASK SYNC
9	124 ENABLE STATEMENT LEVEL ACCOUNTING
10	339 PACKAGE DETAIL
316	CACHED STATEMENT STATISTICS
318	CACHED STATEMENT STATISTICS
29	400 STATIC SQL IN EDM POOL STATISTICS
401	STATIC SQL IN EDM POOL STATISTICS

1	SYSTEM SERVICES
2	DATABASE SERVICES
31	EDM POOL FULL CONDITION
42	A CHECKPOINT STARTED
43	A CHECKPOINT ENDED
76	BEGINNING OF END OF MEMORY REQUEST
77	ENDING OF AN END OF MEMORY REQUEST
1	78 BEGINNING OF AN END OF TASK REQUEST
79	ENDING OF AN END OF TASK REQUEST
102	DETECTION OF SHORT ON STORAGE
103	SETTING OFF OF SHORT ON STORAGE
105	INTERNAL DBID OBID TO DB/TS
106	SYSTEM PARAMETERS IN EFFECT
107	DATA SET OPEN/CLOSE INFORMATION
153	USER-DEFINED EXCEPT-CONDITION TRACE
3	ALL ACCOUNTING
68	BEGINNING OF A ROLLBACK REQUEST
69	ENDING OF A ROLLBACK REQUEST
70	BEGIN COMMIT PHASE 2 REQUEST
71	END COMMIT PHASE 2 REQUEST
72	BEGINNING OF CREATE THREAD REQUEST
73	ENDING OF A CREATE THREAD REQUEST
74	BEGINNING OF A TERM. THREAD REQUEST
75	ENDING OF A TERM. THREAD REQUEST
80	BEGINNING OF AN ESTABLISH EXIT REQ.
81	ENDING OF AN ESTABLISH EXIT REQUEST
2	82 BEGIN IDENTIFY REQUEST
83	END IDENTIFY REQUEST
84	BEGIN PHASE 1 COMMIT REQUEST
85	END PHASE 1 COMMIT REQUEST
86	BEGINNING OF SIGNON REQUEST
87	ENDING OF SIGNON REQUEST
88	BEGINNING OF A SYNC REQUEST
89	ENDING OF A SYNC REQUEST
106	SYSTEM PARAMETERS IN EFFECT
174	BEGIN ARCHIVE LOG MODE (QUIESCE)
175	END ARCHIVE LOG MODE (QUIESCE)
22	MINIPLANS GENERATED
53	END OF DESCR., COMMIT, RLCK OR ERR
55	ISSUANCE OF SET CURRENT SOLID
58	END OF SQL STATEMENT EXECUTION
59	START OF FETCH SQL STATEMENT EXEC.
60	START OF SELECT SQL STATEMENT EXEC.
61	START OF INSERT, UPDATE, DELETE SQL
62	START OF DDL STATEMENT EXECUTION
63	SQL STATEMENT TO BE PARSED
64	START PREPARE SQL STATEMENT EXEC.
65	START OPEN CURSOR STATIC/DYN SQL
66	START CLOSE CURSOR STATIC/DYN SQL
3	92 START AN ACCESS METHOD SERVICES
95	SORT STARTED
96	SORT ENDED
97	ACCESS METHOD SERVICES CMD COMPL.
106	SYSTEM PARAMETERS IN EFFECT
PERFORMANCE	112 ATTRIBUTES PLAN AFTER THREAD ALLOC
177	SUCCESSFUL PACKAGE ALLOCATION
233	START/END CALL TO USER ROUTINE
237	SET CURRENT DEGREE INFORMATION
272	ASSOCIATE LOCATORS INFORMATION
273	ALLOCATE LOCATORS INFORMATION
324	FUNCTION RESOLUTION INFORMATION
325	START/END TRIGGER ACTIVATION
350	COMPLETE SQL STATEMENT
6	BEGINNING OF A READ I/O OPERATION
7	COMPLETION CODE AFTER READ I/O
8	BEGINNING OF SYNCHRONOUS WRITE I/O
9	CC OF SYN OR ASYNC WRITE I/O
10	BEGINNING OF ASYNC WRITE I/O
29	START EDM I/O REQ. LOAD DBD OR CT
30	END OF EDM I/O REQUEST
4	105 INTERNAL DBID OBID TO DB/TS
106	SYSTEM PARAMETERS IN EFFECT
107	DATA SET OPEN/CLOSE INFORMATION
127	AGENT READY TO SUSPEND PAGE WAIT
128	PAGE REQUESTOR RESUMED BY I/O UNIT
226	BEGIN OF SUSPEND FOR PAGE LATCH
227	END OF SUSPEND FOR PAGE LATCH
32	BEGIN OF WAIT FOR LOG MANAGER
33	END OF WAIT FOR LOG MANAGER
34	LOG MANAGER WAIT FOR READ I/O BEGIN
35	LOG MANAGER WAIT FOR READ I/O END
36	LOG MANAGER WAIT FOR NON-I/O BEGIN
37	LOG MANAGER WAIT FOR NON-I/O END
38	LOG MGR WAIT ACT. LOG WRITE BEGIN
39	LOG MGR WAIT ACT. LOG WRITE I/O END
40	LOG MANAGER ARCHIVE WRITE I/O BEGIN
41	LOG MANAGER ARCHIVE WRITE I/O END
5	104 LOG DATA SET MAPPING
106	SYSTEM PARAMETERS IN EFFECT
114	START ARCHIVE READ I/O WAIT
115	END READ ARCHIVE I/O WAIT ON DASD
116	END READ ARCHIVE I/O WAIT ON TAPE
117	BEGIN ARCHIVE READ
118	END ARCHIVE READ
119	BSDS WRITE I/O BEGINNING
120	BSDS WRITE I/O END
228	START ARCHIVE ALLOCATION WAIT
229	END ARCHIVE ALLOCATION WAIT
20	LOCKING SUMMARY
44	LOCK SUSPEND OR AN ID. CALL TO IRLM
45	LOCK RESUME
105	INTERNAL DBID OBID TO DB/TS
106	SYSTEM PARAMETERS IN EFFECT
107	DATA SET OPEN/CLOSE INFORMATION
6	172 UNITS OF WORK INVOLVED IN DEADLOCK
196	LOCK TIMEOUT DETAILS
213	BEGINNING OF WAIT FOR DRAIN LOCK
214	END OF WAIT FOR DRAIN LOCK
218	SUMMARY OF LOCK AVOIDANCE TECHNIQUE
337	LOCK ESCALATION OCCURED

7	21	DETAIL LOCK REQ FROM IRLM
	105	INTERNAL DBID OBID TO DB/TS
	106	SYSTEM PARAMETERS IN EFFECT
	107	DATA SET OPEN/CLOSE INFORMATION
	199	BUFFER POOL DATA SET STATISTICS
	223	DETAIL OF LOCK AVOIDANCE TECHNIQUE
	13	INPUT TO HASH SCAN
	14	END OF HASH SCAN
	15	INPUT MATCH./NON-MATCH INDEX SCAN
	16	INPUT TO THE FIRST INSERT
	17	INPUT TO SEQUENTIAL SCAN
	18	END INDEX SCAN, INSERT, SEQ. SCAN
	105	INTERNAL DBID OBID TO DB/TS
8	106	SYSTEM PARAMETERS IN EFFECT
	107	DATA SET OPEN/CLOSE INFORMATION
	125	RID LIST PROCESSING USAGE
	221	PARALLEL DEGREE FOR PARALLEL GROUP
	222	PARALLEL GROUP ELAPSED TIME
	231	PARALLEL GROUP COMPLETION
	305	TABLE CHECK CONSTRAINTS
	311	TEMPORARY TABLES
	26	WORK FILE OBTAINED FOR SORT
	27	NUMBER OF ORDERED RECORDS SORT RUN
	28	DETAILED SORT INFORMATION
9	95	SORT STARTED
	96	SORT ENDED
	106	SYSTEM PARAMETERS IN EFFECT
10	23	UTILITY START INFORMATION
	24	UTILITY OBJECT OR PHASE CHANGE
	25	UTILITY END INFORMATION
	90	COMMAND TEXT OF ENTERED DB2 COMMAND
	91	COMPLETION STATUS OF A DB2 COMMAND
	105	INTERNAL DBID OBID TO DB/TS
	106	SYSTEM PARAMETERS IN EFFECT
	107	DATA SET OPEN/CLOSE INFORMATION
	108	BEGINNING OF FREE PLAN
	109	END OF BIND/REBIND
	110	BEGINNING OF FREE PLAN
	111	END OF FREE PLAN
	201	STATUS BEF/AFT ALTER BUFFERPOOL
	256	ATTRIBUTES BEF/AFT ALTER BUFFERPOOL
	46	AGENT BEGIN EXEC. UNIT SWITCH
	47	NEW SRB EXECUTION UNIT STARTED
	48	NEW SRB EXECUTION UNIT COMPLETED
	49	BEGIN NEW TCB
	50	END NEW TCB
	51	SHARED LATCH RESUME
11	52	SHARED LATCH WAIT
	56	EXCLUSIVE LATCH WAIT
	57	EXCLUSIVE LATCH RESUME
	93	SUSPEND WAS CALLED
	94	EVENT RESUMED
	106	SYSTEM PARAMETERS IN EFFECT
	113	ATTRIBUTES PLAN AFTER AGENT ALLOC.
	98	BEGIN GETMAIN/FREEMAIN (NONPOOL)
	99	END GETMAIN/FREEMAIN (NONPOOL)
12	100	BEGIN GETMAIN/FREEMAIN (POOL)
	101	END GETMAIN/FREEMAIN (POOL)
	106	SYSTEM PARAMETERS IN EFFECT
	11	RESULTS OF A VALIDATION EXIT CALL
	12	RESULTS OF EDIT EXIT CALL ENCODE RECRD
	19	RESULTS OF EDIT EXIT CALL DECODE A ROW
13	105	INTERNAL DBID OBID TO DB/TS
	106	SYSTEM PARAMETERS IN EFFECT
	107	DATA SET OPEN/CLOSE INFORMATION
	67	START OF ACCOUNTING COLLECTION
14	106	SYSTEM PARAMETERS IN EFFECT
	121	ENTRY ALLOCATING DB2 CONNECTION
	122	EXIT ALLOCATING DB2 CONNECTION
15	154	USER-DEFINED ROUND COND. PERF.
	157	DRDS INTER. WITH RDS RDI CALL TYPES
	158	DRDS INTER. WITH CONVERSATION MGR
	159	DRDS REQUESTING LOCATION DATA
	160	REQUESTING AGENT DATA
16	161	SERVING AGENT DATA
	162	DISTRIB TRANS. MGR REQ. AGENT DATA
	163	DISTRIB TRANS. MGR RESP. AGENT DATA
	167	CONVERSATION ALLOC. REQUEST QUEUED
	183	DRDS RDS/SCC INTERFACE DATA
	211	INFORMATION ABOUT CLAIMS
	212	INFORMATION ABOUT DRAINS
17	213	BEGINNING OF WAIT FOR DRAIN LOCK
	214	END OF WAIT FOR DRAIN LOCK
	215	BEGIN OF WAIT OF CLAIM COUNT TO 10
	216	END OF CLAIM COUNT TO GO TO 0
	249	EDM POOL DBD INVALIDATION
	250	GROUP BUFFER POOL CON/DISCON
	251	P-LOCK OPERATIONS
	256	ALTER BUFFERPOOL COMMAND
20	257	DETAILS OF IRLM NOTIFY REQUEST
	261	GROUP BUFFERPOOL CHECKPOINT
	262	GBPOOLT CASTOUT THRESHOLD PROCESSING
	267	BEGIN CF STRUCT REBLD/EXPAND/CONTR
	268	END CF STRUCTURE REBLD/EXPAND/CONTR
	255	BUFFER REFRESH DUE TO XI
	259	P-LOCK REQUEST/NEGOTIATION REQUEST
21	263	PAGE SET AND PARTITION CASTOUT DATA
	314	AUTHORIZATION EXIT PARAMETERS
	327	LANGUAGE ENVIRONMENT RUN-TIME INFO
22	314	AUTHORIZATION EXIT PARAMETERS

	1	SYSTEM SERVICES
	2	DATABASE SERVICES
	105	INTERNAL DBID OBID TO DB/TS
1	106	SYSTEM PARAMETERS IN EFFECT
	202	BUFFER POOL ATTRIBUTES
	225	SYSTEM STORAGE STATISTICS FOR DBM1
2	152	USER-DEFINED STATISTICS TRACE
	172	UNITS OF WORK INVOLVED IN DEADLOCK
	196	LOCK TIMEOUT DETAILS
	250	CONNECT/DISCONNECT FROM GBP
3	258	DATA SET EXTEND INFORMATION
	330	ACTIVE LOG SHORTAGE
	337	LOCK ESCALATION OCCURRED
	191	DATA CAPTURE FOR DDIS ERRORS
	192	DDM LEVEL 6A HEADER ERRORS
	193	UOW DISPOSITION/SOLCODE MISMATCH
STATISTICS	194	INVALID SNA FMH-5 RECEIVED
	195	FIRST FAILURE DATA CAPTURE FOR DRDS
	203	HEURISTIC DECISION OCCURRED
	204	PARTNER COLD START DETECTED
	205	INCORRECT LOGNAME/SYNC. PARMS
4	206	SNA COMPARE STATES PROTOCOL ERROR
	207	HEURISTICDAMAGE OCCURRED
	208	SNA SYNC POINT PROTOCOL ERROR
	209	SYNC POINT COMMUNICATION FAILURE
	210	LOG NAME CHANGED ON WARM START
	235	CONDITIONAL RESTART DATA LOSS
	236	EXCHANGE LOG NAMES PROTOCOL ERROR
	267	START OF CF STRUCTURE REBUILD
	268	END OF CF STRUCTURE REBUILD
5	230	DATA SHARING GLOBAL STATISTICS
6	225	STORAGE USAGE DETAILS
7	326	WLM DELAY MONITOR SUPPORT
8	199	DATA SET I/O STATISTICS

Disclaimer: This Db2® 12 for z/OS Reference Guide was developed to help users in their daily activities in administrating and programming in Db2 for z/OS. There are no guarantees expressed or implied with the contents in this guide. We want to provide a quality and useful reference for users. Please notify us of any mistakes or errors in this reference guide at blogs@bmc.com. Db2 is a registered trademark of the IBM Corporation.