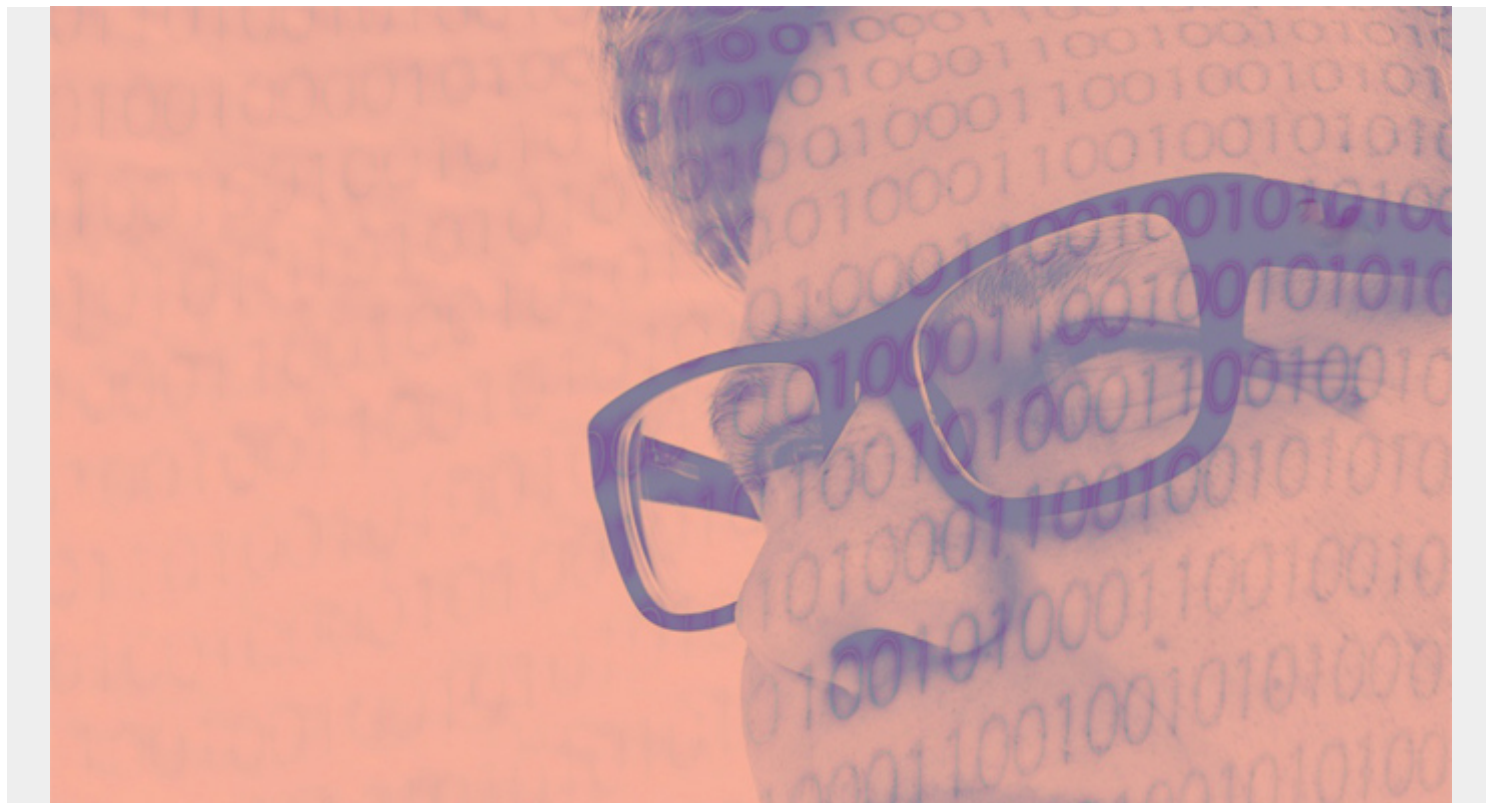


BIND PARAMETERS IN DB2 12



Option	Valid values	Plan	Pckg	Trigr	Qry
ACQUIRE	<u>USE</u> , ALLOCATE	X			
<i>Whether to acquire resources specified in the DBRM at first access or allocation</i>					
	<u>REPLACE</u> , ADD	X, B0	X, B0		
ACTION	REPLACE(RPLVER)		X, B0		
	REPLACE(RETAIN)	X, B0			
<i>Whether object (plan or package) replaces an existing object with same name or is new</i>					
ACOMPARE	<u>NO</u> , <u>NONE</u> , WARN, ERROR	X	X	X	
<i>Determines whether the new access paths are different from the older access paths</i>					
APPLCOMPAT	V10R1, V11R1		X	X	
<i>Specifies the package compatibility level behavior for statis SQL</i>					
APRETAINUP	<u>YES</u> , NO		R0	X	
<i>Whether or not DB2 retains an old package copy when access paths of the old copy are identical to the incoming copy. Applies to PLANMGMT(BASIC) or PLANMGMT(EXTENDED)</i>					
APREUSE	<u>NO</u> , <u>NONE</u> , ERROR, WARN		X	X	
<i>Specifies whether DB2 tries to reuse previous access paths for SQL statements in a package</i>					
APPREUSE	<u>CURRENT</u> , PREVIOUS, ORIGINAL		R0	X	
SOURCE					

Specifies whether DB2 tries to reuse previous access paths for SQL statements in a package

ARCHIVE SENSITIVE YES, NO X X

Whether references to archive-enabled tables are affected by SYSIBMADM.GET_ARCHIVE

BUSTIME
SENSITIVE YES, NO X X

Whether references to application-period temporal tables are affected by CURRENT TEMPORAL BUSINESS_TIME special register

CACHESIZE Value of PLAN AUTH CACHE;
Decimal X

Size (in bytes) of the authorization cache acquired in the EDM pool for the plan

COPY Collection-id, package-id, COPYVER X, B0

Determines that you are copying an existing package and names the package

CONCENTRATE
STMT NO, YES X

Whether to enforce statement concentration at the package level

CONCURRENT WAITFOROUTCOME
ACCESS USECURRENTLYCOMMITTED X X X
RESOLUTION Default depends on SKIPUNCI setting

Determines which concurrent access resolution option to use for statements in a package

CURRENTDATA YES, NO X X X

Whether to require data currency for R0 and ambiguous cursors when isolation level is CS

CURRENT
SERVER Location-name X

Determines the location to connect to before running the plan

DBPROTOCOL DRDA, DRDACBF (package only) X X

Protocol to use when connecting to a remote site that is identified by a three-part name

DESCSTAT NO, YES X X

Whether DB2 builds a DESCRIBE SQL descriptor when binding statis SQL statements

DEFER(PREPARE)
DEFER NODEFER(PREPARE) X X
DEFER(INHERITFROMPLAN)

Whether to defer preparation of dynamic SQL statements that refer to remote objects or to prepare them immediately.

DEFER(PREPARE) is assumed for REOPT(AUTO, ALWAYS and ONCE)

DEGREE 1, ANY X X

Whether to attempt to run a query using parallel processing to maximise performance

DEPLOY (collection-id.package-id),
COPYVER(version-id) X

Deploys a native SQL procedure

DISCONNECT EXPLICIT, AUTOMATIC, CONDITIONAL X

Determines which remote connections to destroy during commit operations

Option	Valid values	Plan	Pckg	Trigr	Qry
DYNAMICRULES	<u>RUN</u> , BIND, DEFINEBIND(PKG ONLY), DEFINERUN(PKG ONLY), INVOKEBIND(PKG ONLY), INVOKERUN(PKG ONLY)	X	X		
	DEFINEBIND, DEFINERUN, INVOKEBIND, INVOKE RUN		X		
<i>Determines which values apply at runtime for dynamic SQL attributes</i>					
ENABLE/DISABLE	BATCH, CICS, DB2CALL, DLIBATCH, IMS, IMSBMP, IMSMPP, RRSAF, <u>*</u> REMOTE	X	X		
<i>Determines which connections can use the plan or package</i>					
ENCODING	ASCII, EBCDIC, UNICODE, <i>ccsid</i>	X	X		
<i>Application encoding for all static statements in the plan or package (defaults to installed selection)</i>					
EXPLAIN	<u>NO</u> , YES, ONLY	X	X	X	
<i>Whether to populate the PLAN_TABLE with information about the SQL statements</i>					
EXTENDED INDICATOR	<u>NO</u> , YES		X		
<i>Determines if DB2 recognizes extended indicator variables when associated package is run</i>					
FILTER	' <i>filter-name</i> '				FQ
<i>Allows you to delete a set of queries in the SYSIBM.SYSQUERY table under a {tag} value specified by the SYSQUERY.USERFILTER column. Also works with FREE QUERY</i>					
FLAG	<u>I</u> , W, E, C	X	X	X	
<i>Determines what messages to display</i>					
GENERIC	' <i>string</i> '	X	X		
<i>Specifies one or more bind options that are supported by the target server, but are not supported by DB2 for z/OS as options for BIND PACKAGE or REBIND PACKAGE</i>					
GETACCEL ARCHIVE	<u>NO</u> , YES	X	X		
<i>Whether a static SQL query bound for acceleration retrieves archive data</i>					
IMMEDIATE	<u>NO</u> , YES, INHERITFROMPLAN	X	X		
<i>Whether immediate writes will be done for updates made to GBP-dependent page sets/partitions</i>					
ISOLATION	<u>RR</u> , RS, CS, UR, NC	X	X	X	
<i>Determines how far to isolate an application from the effects of other running applications</i>					
KEEPDYNAMIC	<u>NO</u> , YES	X	X		
<i>Determines whether DB2 keeps dynamic SQL statements after commit points</i>					
LIBRARY	<i>Dbrm-pds-name</i>		X, B0		
<i>Determines which partitioned data set to search for DBRMs listed in the member option</i>					
LOOKUP	<u>NO</u> , YES				BQ
<i>Determines whether a query has matching access plan hint information in the SYSIBM.SYSQUERYPLAN table</i>					
MEMBER	<i>Dbrm-member-name</i>		X, B0		
<i>Determines what DBRMs to include in the package</i>					

OPTHINT	<i>Hint-id</i>	X	X		
<i>Controls whether query optimization hints are used for static SQL</i>					
OPTIONS	COMPOSITE , COMMAND			X, BC	
<i>Specifies which bind options to use for the new package</i>					
OWNER	<i>Authorization-id</i>	X	X		
<i>Determines the authorization ID or the owner of the object (plan or package)</i>					
	<i>Location-name.collection-id.</i>			X	
PACKAGE	<i>package-id(version-id)</i>				
	(*) – Rebind Only			X,RO	
<i>Determines which package or packages to bind or rebind</i>					
PATH	<i>Schema-name, USER, (schema-name, (USER)...) </i>	X	X		
<i>SQL path that DB2 uses to resolve unqualified UDTs, functions and stored procedure names</i>					
PATHDEFAULT	Mutually exclusive with PATH	X	X		
<i>Resets PATH for package or plan to "SYSIBM", "SYSFUN", "SYSPROC", or plan/package qualifier</i>					
PKLIST or NOPKLIST	(<i>Location-name.collection-id.package-id...</i>) PKLIST only	X			
<i>Determines which package to include for the package list in the plan</i>					
PROGAUTH	DISABLE , ENABLE	X			
<i>Whether DB2 performs authorization checking to determine whether DB2 can execute a plan</i>					
PLANMGMT	OFF , BASIC, EXTENDED		X	X	
<i>Retains, during a rebind operation, all relevant package information (metadata, query text, dependencies, authorizations, access paths, and so on) in catalog tables and in the directory</i>					
QUALIFIER	<i>Qualifier-name</i>	X	X		
<i>Determines the implicit qualifier for unqualified names of objects in the plan or package</i>					
QUERY ACCELERATION	NONE , ENABLE, ALL ENABLEWITHFALLBACK, ELIGIBLE	X		X	
Option	Valid values	Plan	Pckg	Trigr	Qry
<i>Whether a static SQL query is bound for acceleration</i>					
QUERYID	' number ' ALL				FQ
<i>Frees entries from SYSIBM.SYSQUERY with same value (or ALL), and corresponding entries in SYSIBM.SYSQUERYPLAN table or SYSIBM.SYSQUERYOPTS table</i>					
RECORD					
TEMPORAL	YES , NO		X		
HISTORY					
<i>Whether changes to data in a system-period temporal table that are made by static or dynamic SQL statements cause changes to corresponding history table of the system-period temporal table</i>					
RELEASE	COMMIT , DEALLOCATE, INHERITFROMPLAN	X	X	X	
<i>Determines when to release resources that the program uses, either at commit or at termination</i>					
REOPT	ONCE, ALWAYS, AUTO, NONE	X	X		
<i>If access path is determined at runtime (host variables, parameter markers, special registers)</i>					
ROUNDING	CEILING, DOWN, FLOOR HALFDOWN, HALFEVEN , HALFUP, UP	X	X		

Specifies the rounding mode at bind time

SQLERROR **NOPACKAGE**, CONTINUE, CHECK X

Whether to create a package if the package contains an SQL error

SQLRULES **DB2**, STD X

Whether a Type 2 connection can be made according to DB2 rules for an existing connection

SWITCH PREVIOUS, ORIGINAL X X

Restores all previous or original package information in the catalog tables and directory to that of the specified package copy

SYSTIME **YES**, NO X X
SENSITIVE

Whether references to system-period temporal tables are affected by value of CURRENT TEMPORAL TEMPORAL

SYSTEM_TIME

VALIDATE **RUN**, BIND X X

Whether to recheck at runtime 'not found' and 'not authorized' errors found at bind time

BO = BIND only, BC = BIND copy, RO = REBIND only, FQ = FREE QUERY, BQ = BIND QUERY

BOLD/UNDERSCORE = default

Disclaimer: This Db2® 12 for z/OS Reference Guide was developed to help users in their daily activities in administrating and programming in Db2 for z/OS. There are no guarantees expressed or implied with the contents in this guide. We want to provide a quality and useful reference for users. Please notify us of any mistakes or errors in this reference guide at blogs@bmc.com. Db2 is a registered trademark of the IBM Corporation.